



OTERO SOIL AND WATER CONSERVATION DISTRICT

Current SWCD Board of Supervisors:

- Bob Nichols, Chairman
- Rick Baish, Vice Chairman
- Jeff Rabon, Secretary/Treasurer
- Eddie Vigil, Supervisor
- Wacey Cochise, Supervisor
- Colt Howland, Supervisor
- James Evrage, Supervisor

3501 Mesa Village Dr. Alamogordo, NM 88310

District Employee:

Victoria Milne, District Manager



NRCS Staff:

- Phillip Herrera, District Conservationist
- Katie Pritchett, Soil Conservationist
- Morgan Smith, Soil Conservation Technician
- Justin Padilla, Range Management Specialist
- Erika Rodriguez, Range Management Specialist
- Amalia Montoya, Area Range Conservationist

FSA Staff:

- Cheyanna Reyes, County Executive Director
- Amanda Wylie-Largeteau, Program Technician

District board meetings are generally, the first Wednesday of each month at 9:30 am. The meetings are held in the same building, in the Forest Service's Guadalupe conference room located at 3463 Las Palomas Dr.

**The USDA Alamogordo Service Center will be closed:
May 30th - Memorial Day and July 4th - Independence Day**



OTERO SOIL AND WATER CONSERVATION DISTRICT

3501 Mesa Village Drive, Alamogordo, NM 88310 (575) 437-3100 x 3



Check out the Interactive Mapping of our noxious weed program and other projects @ oteroswcd.org.

We have partnered with Bell Geographic to allow residents an opportunity to see more of what we do and where the projects are located.

INSIDE THIS ISSUE:

Hazardous Fuels Reduction Program	2
NM Youth Ranch Management Camp	3

Otero SWCD Noxious Weed Program Guidelines

Requirements for participation are:

1. Resident of Otero County
2. Current Private Applicators License
3. Presence of a Otero County Noxious Weed
4. Approval to map noxious weeds
5. Coordinate plan for treatment
6. Follow-up after treatment

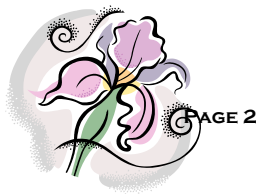
The 2022 Noxious Weed Control Program on private lands began on April 4th. We are currently targeting noxious weeds in the lower elevations. In May we will begin work in the higher elevations. Sign-up forms are available on the website programs and projects page or in the office located at 3501 Mesa Village Drive.

Otero County

Noxious Weed List

African Rue	Musk Thistle
Hoary Cress	Russian Knapweed
Leafy Spurge	Spotted Knapweed
Malta Star-thistle	Diffuse Knapweed
Yellow Toadflax	Scotch Thistle
Yellow Star-thistle	Canada Thistle
Dalmatian Toadflax	Teasel
Purple Star-thistle	Perennial Pepperweed
Camelthorn	Halogeton





WUI Thinning Program!

\$\$ Tree Thinning Money Available\$\$

Do you own property in Otero County?

- ◆ Are you concerned with fire mitigation and forest health on your property?
- ◆ Would you like technical or financial assistance to thin your forest or create defensible space around your home?

There are state grant programs that can provide landowners with technical and financial assistance to thin privately owned forested land and/or create defensible space around homes. The main objectives of the Otero County WUI Program is to mitigate fire risk while improving forest health. Programs may become available to assist private landowners to thin their properties.

If you are interested in the Cost Share Program and would like an application or additional information about available grants for fuel reduction, please call the South Central Mountain Resource Conservation and Development Council at (575) 937-1789 or New Mexico State Forestry 354-2231 send emails to tmacsaw@gmail.com.



Timberon, Bureau of Land Management, & South Central Mountain RC&D - Hazardous Fuel Reduction Project.

This project is just getting started. There will be public meetings in the summer. Check back later for more information!



EDUCATING TOMORROW'S LEADERS IN RANCH MANAGEMENT, TODAY.

June 12-17, 2022

CS Ranch | Cimarron, New Mexico

Youth Age 15-19 | \$300

A total of 30 participants will be invited to this year's camp with three of those openings reserved for out-of-state youth, age 15-19.

Completed applications will be reviewed by the NMYRMC committee and applicants notified of acceptance by May 13th. Payment of \$300 or sponsorship arrangement is due on or before June 3, 2022. "Helps youth appreciate the 'why' behind ranching."



Deadline
May 6, 2022

Going to camp was a life-changing experience for 27 New Mexico youth. They didn't participate in recreational activities and crafts, but received college-level instruction in managing a ranch. During New Mexico Youth Ranch Management Camp, high school-age students will be introduced to the many aspects of running a ranch, from financial statements and marketing strategies to producing quality beef and managing natural resources and wildlife. College-level hands-on curriculum provided participants with information to develop a ranch management plan for a scenario similar to the host ranch.

The collaboration between Extension specialists, County Extension agents and members of the ranching industry provides an opportunity for youth to learn about the many aspects of ranching.

For the third time in seven years, the camp will be held on the CS Cattle Company's 130,000-acre ranch at the foot of the Sangre de Cristo mountain range near Cimarron, New Mexico.

More than 180 youth who have participated in past ranch camps gain a greater appreciation of the science and opportunities in agriculture. It is also a win-win for our aging agricultural industry with more young people having interest in going into this type of work.